

DESCRIPTION:
24 X 24 X 18
SUBMITTAL

CUSTOMER:
STREAMLINE

MATERIAL:
.125 ALUM

FINISH:
MILL



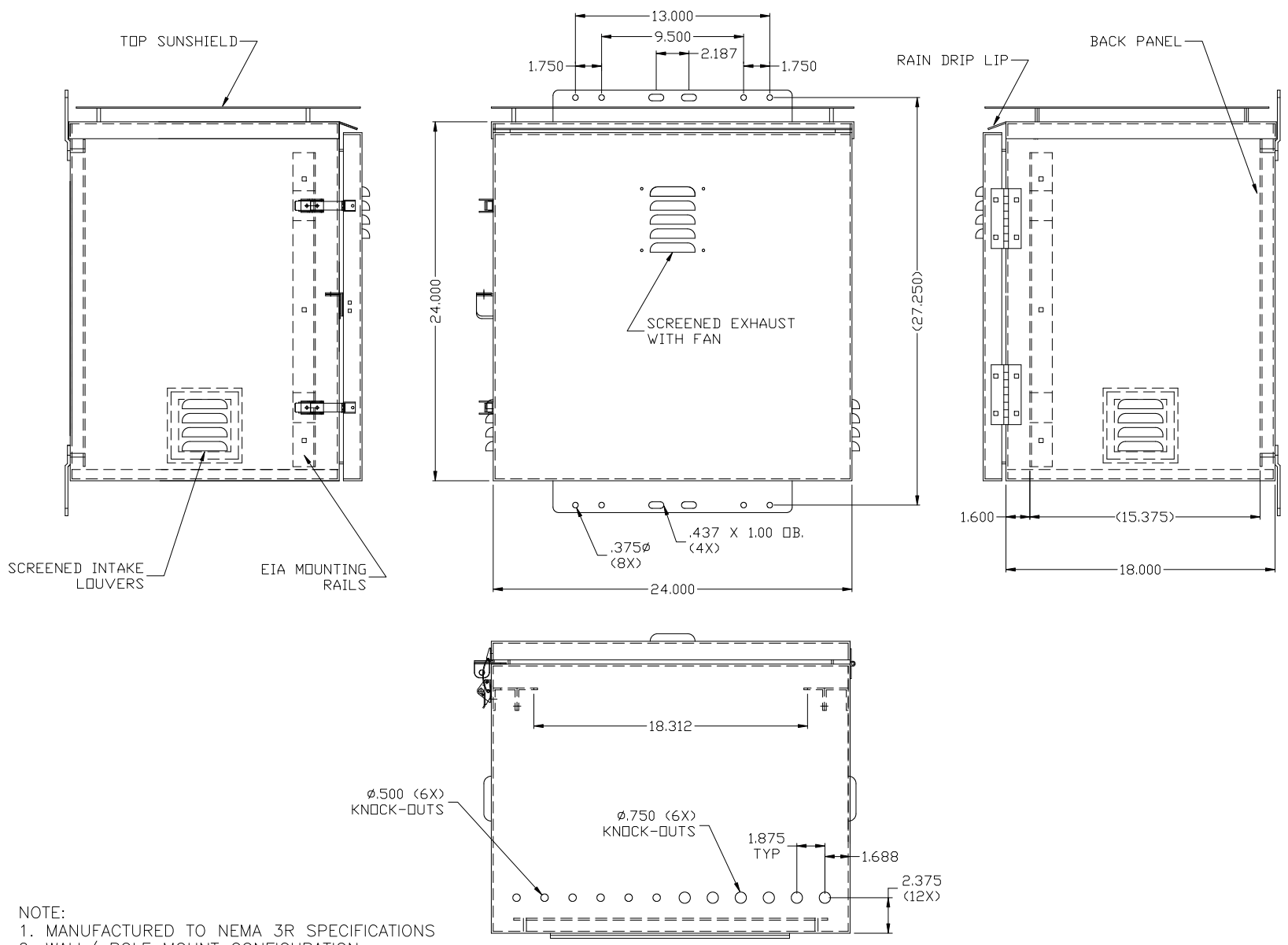
32227 DOBBIN HUFSMITH, MAGNOLIA, TX. 77354
Phone: 1-800-825-5805 Fax: (281) 356-0025

THIS DOCUMENT AND THE INFORMATION CONTAINED
HEREWITHIN IS PROPRIETARY TO BISON PROFAB AND
SHALL NOT BE COPIED, REPRODUCED OR UTILIZED
IN ANY FASHION WITHOUT THE EXPRESS WRITTEN
CONSENT OF BISON PROFAB.

THIS PRINT IS INTENDED FOR
SUBMITTAL PURPOSES ONLY.

DRAWN BY: DATE:
SEG 7/19/11

CHKD BY:	DATE:	APP. BY:	DATE:	DESCRIPTION	DATE	BY	DATE	BY
					7/20/11	SEG		
A				RELEASE				



- NOTE:
1. MANUFACTURED TO NEMA 3R SPECIFICATIONS
 2. WALL/ POLE MOUNT CONFIGURATION
 3. TWO (2) SST DRAW LATCHES
 4. SST HINGE, HARDWARE, AND PADLOCKABLE HASP
 5. 19" EIA RACK RAILS (12U) 3" FROM FRONT OF DOOR (12 SPACES AVAILABLE)
 6. ONE .125 ALUM. BACK PANEL 21.000 X 21.875. (MILL FINISH)
 7. SCREENED INTAKE AND EXHAUST LOUVER OPENINGS
 8. ONE (1) 105 CFM FAN AND THERMOSTAT INSTALLED ON DOOR
 9. 1/2 X 1 1/2 GRISWOLD GASKET
 10. SUNSHIELD ON TOP ONLY, .090 ALUM.
 11. SIX (6) 1/2", AND SIX (6) .750" KNOCK-OUTS ON BOTTOM AS SHOWN
 12. SHIPPED ON WOODEN PALLET W/ PROTECTIVE WRAPPING